

Microvalve

Miniaturized Double-Latching Solenoid Valve



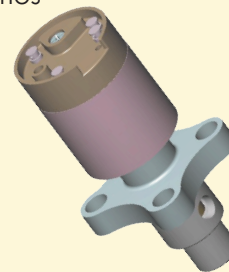
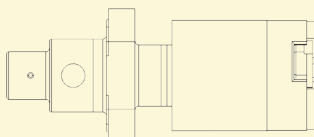
Specifications

Mass (total):	25 grams
Mass (moving) :	2 grams
Height (overall):	1.616"
Height (above manifold):	1.101"
Valve Orifice Diameter:	0.070"
Pintle Travel:	0.030"
Power:	18-28 VDC
Helium Leak Rate (instantaneous):	< 1x10 ⁻¹⁰ atm-cc/sec
Helium Leak Rate (steady state):	< 5x10 ⁻⁹ atm-cc/sec
Operational Temperature:	-60°C to +220°C
Actuation Time:	< 1 millisecond
Maximum Diferential Pressure:	200 psig
Rated C _v	0.11

Key Features

- All materials in gas flow are chemically inert
- Removable solenoid
- Floating pintle tip that self-seats
- Coils can be run in parallel or in series

Actual Size



Flight Proven

- SAM-MSL (Curiosity)
- NGMIS (MAVEN)
- SPICE (Solar Orbiter)
- MOMA (ExoMars)
- LAVA (Resource Prospector)
- SAM (ISS)
- MPAM (Orion)

Contact Us:

Mindrum Precision, Inc.
10000 4th Street
Rancho Cucamonga, CA 91730

(P) 909.989.1728
(F) 909.987.3709
sales@mindrum.com



MINDRUM PRECISION, inc.